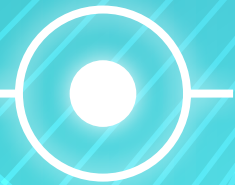




THE CHAIN TLM PLATFORM

We introduce you the CHAIN TLM project
A global online management platform for transportation providers and
logistics companies



PROBLEMS AND CHALLENGES OF TRANSPORT MARKET

Transport market problems decrease traffic capacity of the global transport infrastructure; as a result, it doesn't meet demands of the world trade.



Cargo theft, loss, and damage



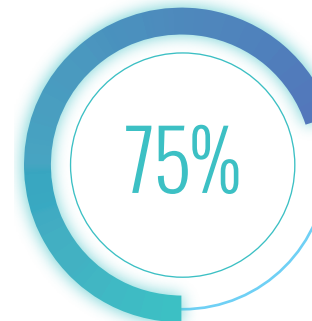
Inefficient IT services



High expenses



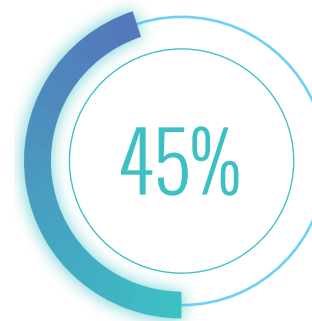
Numerous intermediaries



Long shipment time



Recurrent delivery time delays



Numerous risks: unpaid services, wrong tollage, cargo underinsurance, human error, etc.



TRANSPORTATION PROVIDER'S INTERNAL PROBLEMS:

High cost of vehicles and transportation infrastructure objects

1

Efficient and functional IT systems for managers are absent

2

Tedious manual record keeping

3

Complicated system of drafting and transfer of documents

4

Numerous risks: accidents and force majeure, theft, fraud, unpaid services, currency exchange risk, human faults, etc.

5

Vehicles' empty hours

9

Time losses during vehicles' idle hours

8

Vehicle's load below capacity

7

Long payment time

6



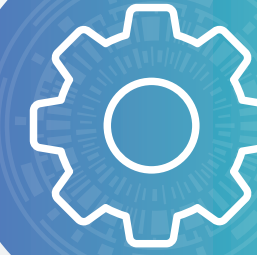
TRANSPORTATION PROVIDER'S IT PROBLEMS:



Effective template IT solutions for transportation and logistics are absent



Access to innovative IT solutions is limited



Each company's IT system is created individually



Poor compatibility with external IT services for the sale of services



The cost of automation control systems is very high



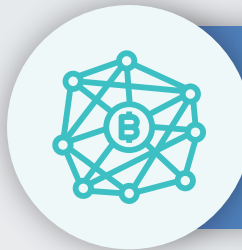
Lifespan of IT solutions is commonly 3 to 5 years

WE ARE CREATING A NEW ECO-FRIENDLY TRANSPORTATION ENVIRONMENT

Application of innovative technologies is the only path to breakthrough in transportation industry.



New possibilities



Blockchain



Internet of things



Smart Contract



New level of quality



Big Data



Artificial Intelligence



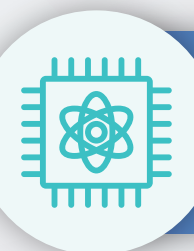
Virtual and augmented realities



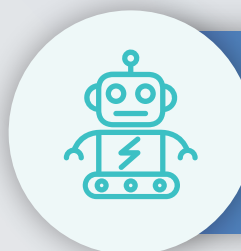
New business solutions



Biometrics



Quantum computer



Robotics

OBJECTIVE OF THE PROJECT

Create a state-of-the-art online management system designed for transportation providers integrated into the universal worldwide transportation network, using leading-edge IT solutions

OUR MISSION

is to make IT solutions more accessible for business

Basis of the platform the platform is based on 3D virtual media modules, performing the following functions:



Integrate and visualize various parameters of data received from sensors in real-time mode



Simulate events and propose the most efficient solutions



Provide control over processes using remote control technologies





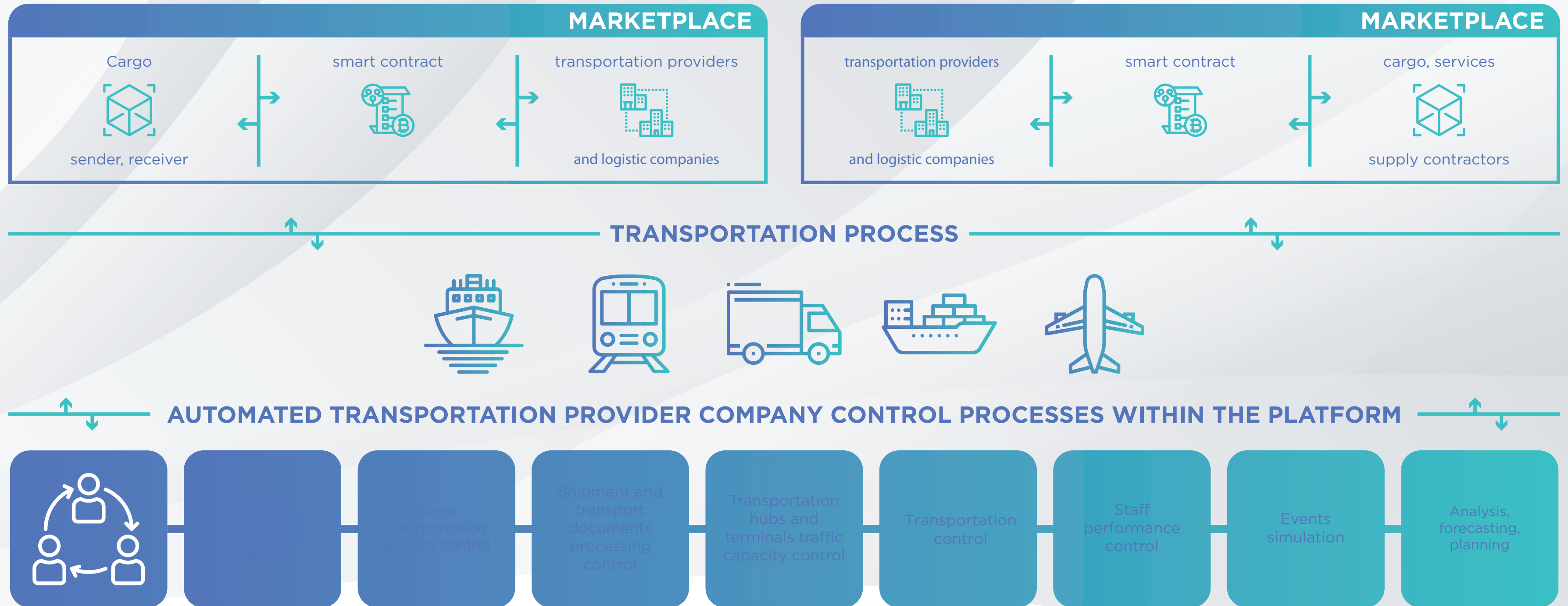
PROCEDURES WITHIN THE PLATFORM

Transportation provider company manager performs the following basic procedures in real-time mode:





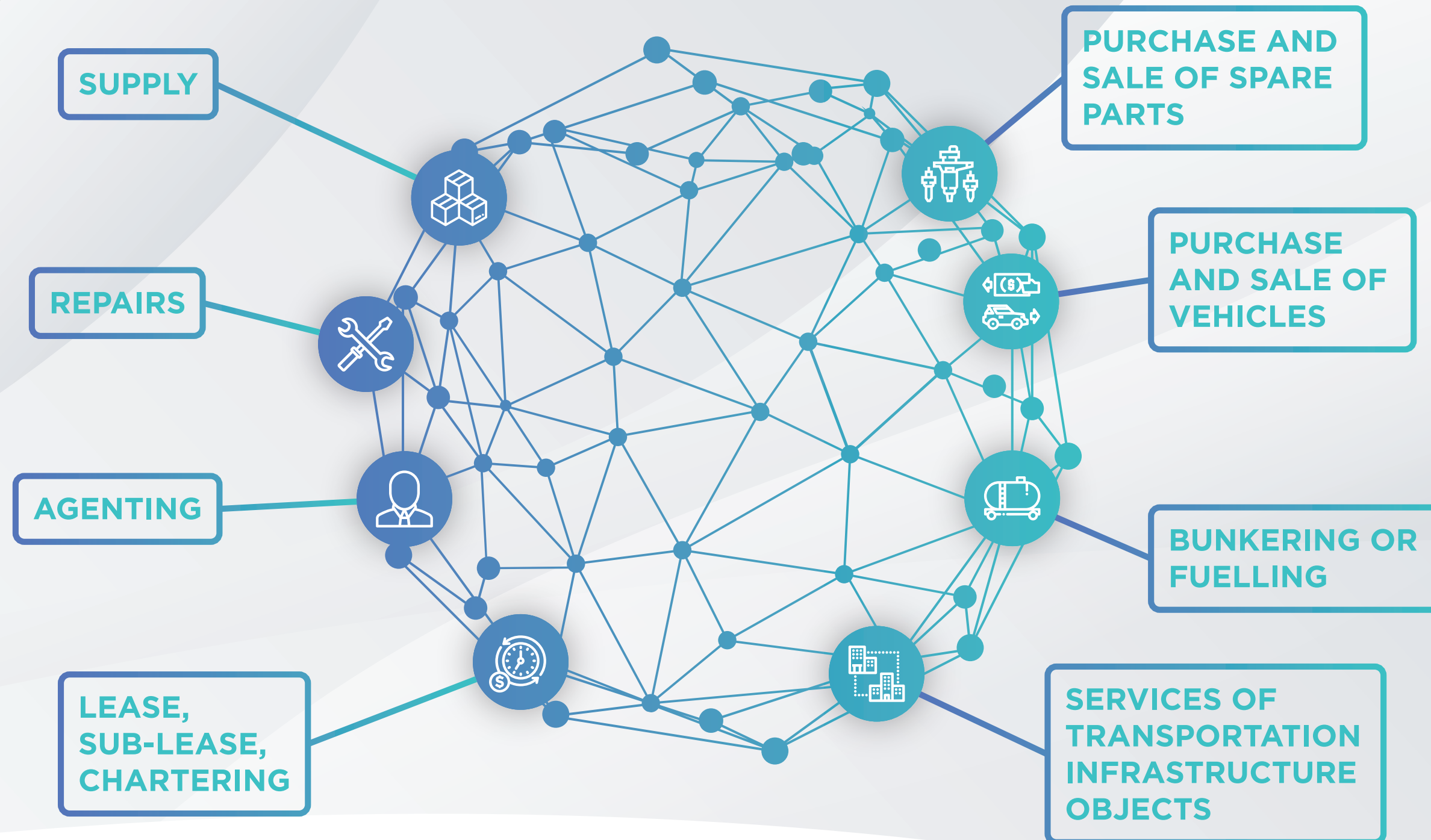
CHAIN TLM OPERATION SCHEME





CHAIN TLM

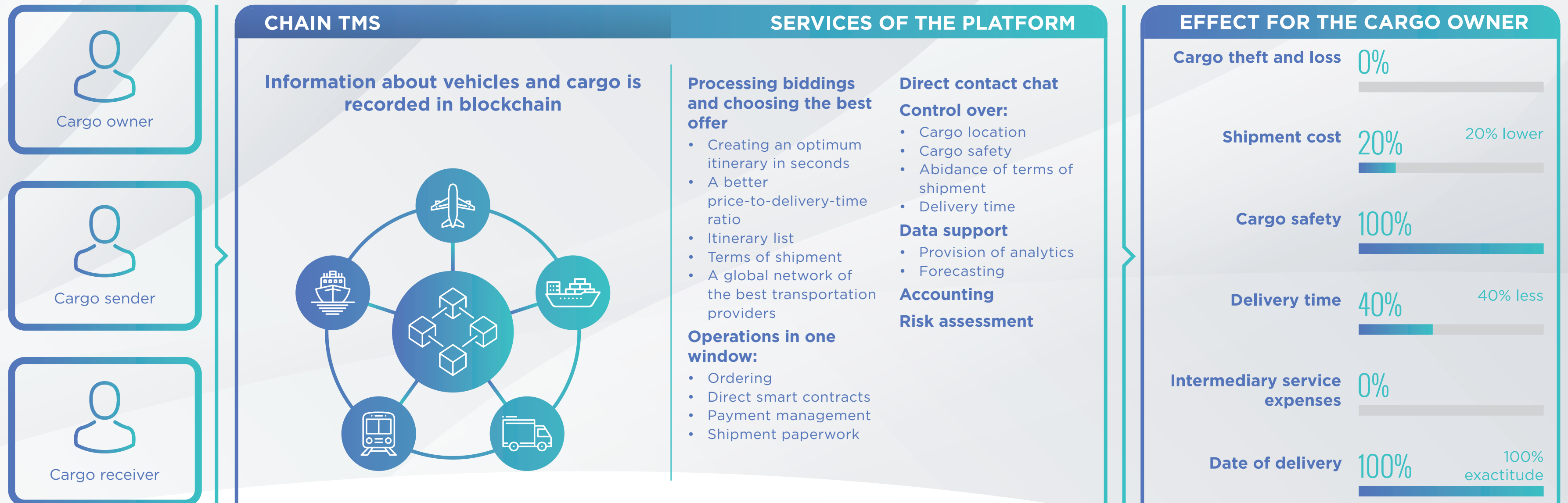
Automates loading and shared use control of: vehicles large-sized pieces of cargo supply depots of various types dumb vessels and unpowered railway cars





CHAIN TLM BUSINESS SOLUTIONS FOR CARGO OWNERS

DEMAND: delivering cargo to customers in a course of world trade. Domestic and international markets.



CHAIN TLM BUSINESS SOLUTIONS FOR TRANSPORTATION PROVIDERS

CARGO TRANSPORTATION: unimodal, intermodal, multimodal



Logistics company

CARGO TRANSPORTATION



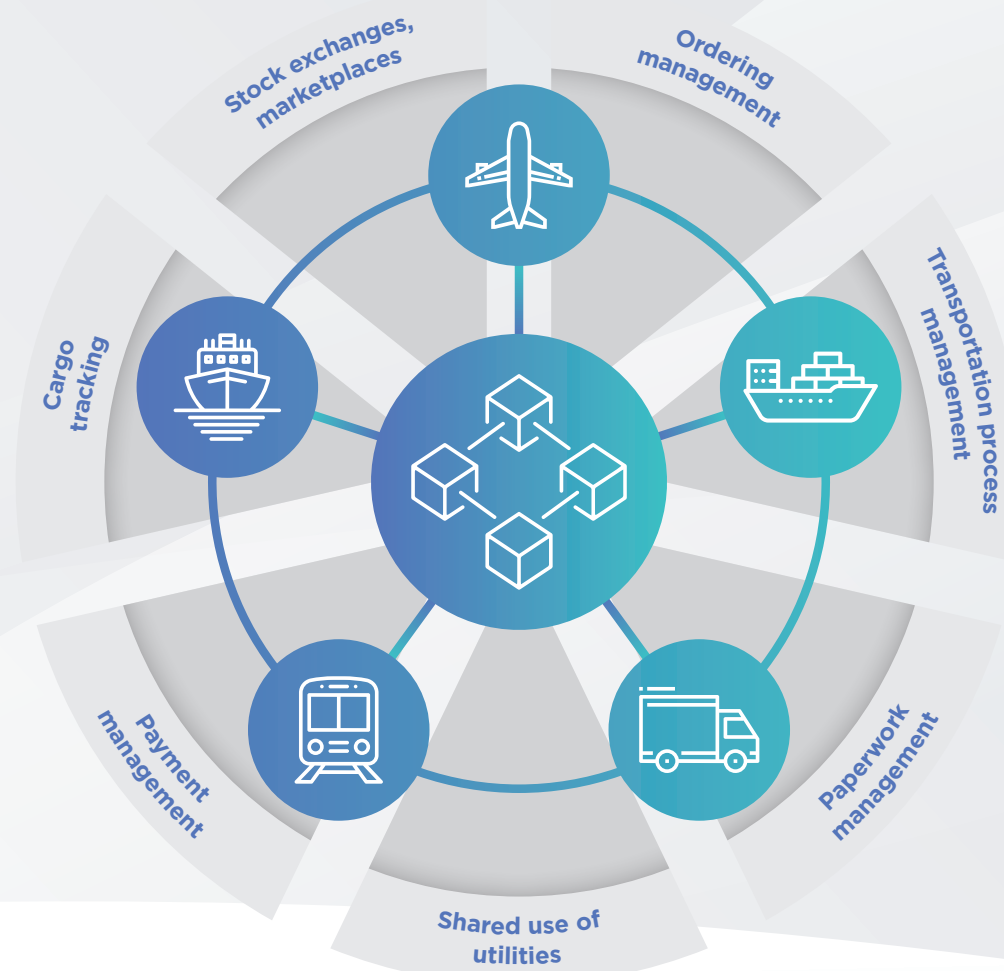
Transportation provider

LEADING-EDGE SOLUTIONS FOR CARGO TRANSPORTATION MANAGEMENT



Transportation infrastructure enterprises

Information about vehicles and cargo is recorded in blockchain



EFFECT FOR TRANSPORTATION PROVIDERS

Access to the best IT solutions **100%**

Used capacity of vehicles **40%** 40% growth

Security of payment **100%**

Management efficiency, due to **50%** 50% growth

Reduction of

- expenses
- shipment time
- shipment cost
- empty hours

- idle hours
- human faults
- frauds
- thefts

WE WELCOME NEW PARTICIPANTS OF THE CHAIN TLM PROJECT

INVESTORS



IT ENTERPRISES



TRANSPORTATION
PROVIDERS



NGOS AND INTERNATIONAL
ASSOCIATIONS

SMART TRANSPORT

www.ChainTLM.com
ESTONIA